



LEAF & FOIL- 2 TECHNIQUES OF MULTI-FOILED SURFACE



SUPPLIES

- white polystyrene board
- Leaf & Foil Size
- 3 colors of foil
- Clear Finish
- Graphite Chalk Paint®
- topcoat brush
- roller, chip brush or foam brush
- scrub brush

BASECOAT BOARD



Paint the board with 2 coats of Graphite. Let dry. Tape off the board into 4 sections. You can also tape around the edges of the board to make a white border.

ROLL LEAF & FOIL SIZE



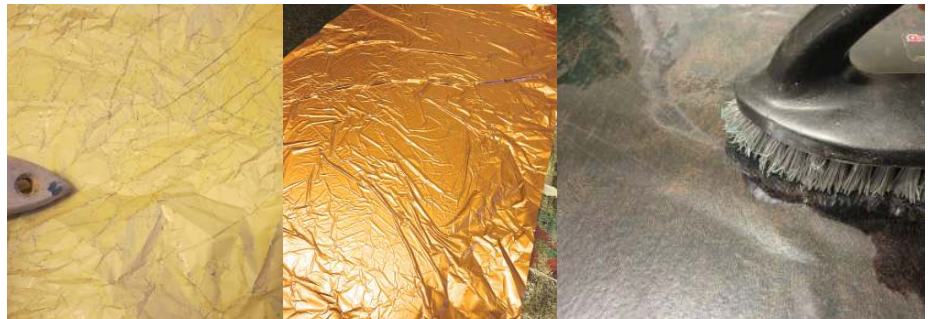
Use a foam roller to roll on a thin layer of Leaf & Foil Size. Let the board come to tack for 45 minutes. The Size will be ready when it is clear.

ADD FOIL in Section One



In one section, pounce on the first foil color. Wad up the piece of foil, keeping the brown side down. Pounce and rotate to leave the foil on the surface. Repeat with the next 2 colors. Cover the surface with color. If you do not cover the entire surface, it will be tacky.

ADD FOIL in Section Two



Crumple up a piece of foil, then straighten it out. Use a sharp object to remove some foil to create linear cracks. Lay it over the board and rub with the scrub brush to release the foil. Use a second and third color foil for extra dimension. Fill in the cracks you created in the foil.



LEAF & FOIL- 2 TECHNIQUES OF MULTI-FOILED SURFACE

Page 2

ADD CLEAR FINISH



Roll or brush Clear Finish over the entire board to keep the surface shiny and protect the finish. (If you are working on a furniture piece add at least one more layer of Clear Finish.)

WORKSHOP NOTES: